



ગુજરાત વેપારી મહામંડળ

Gujarat Chamber of Commerce & Industry



Pathik Patwari
President

Ajay Patel
Sr. Vice President

Yogesh Parikh
Vice President

Anil Jain
Hon. Secretary

Dilip Padhya
Hon. Secretary (R)

Apurva Shah
Hon. Treasurer

15th Nov 2022 / 28450

Shri D. M. Thaker,
Member Secretary,
Gujarat Pollution Control Board,
Paryavaran Bhavan,
Gandhinagar.

Sub: CEPI monitoring

Resp. Sir,

Greetings from the Gujarat Chamber of Commerce & Industry (GCCI).

In connection with above subject, we would like to mention that post monsoon monitoring in CEPI area is due in 2022. Last CEPI monitoring was carried out in Jan 2020. Before monitoring in Jan 2020, a joint meeting of GPCB, CPCB and representatives of GCCI and Industries Associations was held on 01/01/2020. In this meeting monitoring stations and criteria pollutants of all CPAs /SPAs were finalized and subsequently monitoring was carried out.

GCCI has recently conducted a meeting with representatives of all SPAs /CPAs regarding any change /modification in monitoring stations and criteria pollutants. We have received representations from all CPAs/SPAs about monitoring stations and criteria pollutants. The copy of representation of 1. Vatva 2. Narol 3. Surat 4. Nandesari are attached herewith.

We now request you to arrange a joint meeting of GPCB, CPCB, GCCI and representatives of all SPAs /CPAs for finalizing monitoring stations and criteria pollutants, so that monitoring can be start preferably in Dec 2022.

We look forward to you for positive response.

With regards,

Dr. Yogendrakumar Trivedi
Secretary General



The Green Environment Services Co-op. Society Ltd.

(Common Effluent Treatment Plant, MEE & Spray Dryer)

Rameshbhai M. Patel
Chairman

Anandbhai I. Patel
Vice-Chairman

Bhupendrabhai C. Patel
Vice-Chairman

Pankajbhai P. Dadhania
Vice-Chairman

Nileshbhai S. Damani
Hon. Secretary

Jitendrabhai J. Doshi
Hon. Jt. Secretary

Navinbhai G. Patel
Hon. Treasurer

GESCSL/2022/

10 November 2022

To,

The President,

Gujarat Chamber of Commerce & Industry (GCCCI),

Ahmedabad.

Subject: To submit Criteria Pollutants and Monitoring stations for Post Monsoon CEPI
2022 evaluation to GPCB

Dear Sir,

This is with reference to our meeting held on 9th November 2022 at 4 PM at your platform in order to finalize the methodology for Post Monsoon Monitoring of CEPI 2022. We hereby attached the Criteria Pollutants and Monitoring stations for the evaluation of Post Monsoon CEPI 2022 for Vatva Cluster. (*Annexure – 1*)

Regards

Deepak Davda

Executive Director & CEO



Certificate Number 5778

Regd. Office & CETP Site : Plot No. 244-251, Phase II-GIDC Estate, Vatva, Ahmedabad - 382 445

Tele : (079) 25892283, 25832449, Mob. : 98250 18947, 75730 17676, 75730 27676

E-mail : info@gescsl.com Web Site : www.gescsl.com

SLF Site : Survey No. 89 - 90 - 91, Village : Vinzol, Ahmedabad. Phone : 92278 18213



The Green Environment Services Co-op. Society Ltd.

(Common Effluent Treatment Plant, MEE & Spray Dryer)

Rameshbhai M. Patel
Chairman

Anandbhai I. Patel
Vice-Chairman

Bhupendrabhai C. Patel
Vice-Chairman

Pankajbhai P. Dadhania
Vice-Chairman

Nileshbhai S. Damani
Hon. Secretary

Jitendrabhai J. Doshi
Hon. Jt. Secretary

Navinbhai G. Patel
Hon. Treasurer

Annexure – 1

Post Monsoon CEPI 2022 - Monitoring Locations and Criteria Pollutants for Vatva Cluster

Air Monitoring

- A. Monitoring Location:
1. Centre of excellence- Vatva
 2. Patel Chem Phase 2 – Vatva
- B. Proposed criteria pollutants:
1. PM₁₀
 2. Benzene
 3. SO_x

Ground water Monitoring

- A. Monitoring Location:
1. Bore well no. 12, VIA-Vatva
 2. CETP Vatva
- B. Proposed criteria pollutants :
1. Bio-chemical oxygen demand (BOD)
 2. Fluorides
 3. TKN (Total Kjeldahl Nitrogen)

Surface water Monitoring

- A. Monitoring Location:
1. Vinzol lake – Vatva
 2. Kharicut canal at Vinzol bridge
 3. Miroli pumping station
- B. Proposed criteria pollutants:
1. Total Suspended solids (TSS)
 2. Copper (Cu)
 3. Phenolic compounds



Certificate Number 5778

Regd. Office & CETP Site : Plot No. 244-251, Phase II-GIDC Estate, Vatva, Ahmedabad - 382 445

Tele : (079) 25892283, 25832449, Mob. : 98250 18947, 75730 17676, 75730 27676

E-mail : info@gescsl.com Web Site : www.gescsl.com

SLF Site : Survey No. 89 - 90 - 91, Village : Vinzol, Ahmedabad. Phone : 92278 18213



સાઉથ ગુજરાત ટેક્સટાઇલ પ્રોસેસર્સ એસોસીએશન

South Gujarat Textile Processors Association

Plot No. 200, Vrajlal Mohanlal Dhamanwala Complex, G.I.D.C. Estate, Opp. S.B.I. Pandesara, SURAT-394 221.

E-mail : info@sgtpa.com Website : www.sgtpa.com Ph. (0261) 2896140, 2896141 Fax : (0261) 2896142

Date: 11/11/2022

The President

Gujarat Chamber of Commerce and Industries
Shri Ambica Malls, Gujarat Chamber Building
Ashram Road
Ahmedabad: 380009



Subject: Regarding Industry Specific Parameters for Calculation of CEPI Score and Location of Monitoring Stations for Surat Region, Sachin and Pandesara.

Sir,

During environmental monitoring for CEPI score calculation in the year 2018, parameter selected by CPCB for Surface Water and for Ground Water for CEPI score calculation is based on higher values of those parameters with reference to permitted parameters. It was very clear that they are not selected to reflect the contribution of industry. For assessing contribution due to industrial pollution, it is more legitimate to select parameters which are specific to industries rather than selecting general parameters.

Our proposal for parameters which are specific to industries, with justification for selecting them is provided in following table.

Justification for selection of industrial specific parameters

Parameter	As per CPCB	Proposed as per Industrial specific	Justification
Ambient Air	PM 10, PM 2.5, CO	PM 10, SO ₂ , CO	
Justification: <ol style="list-style-type: none">1. Industries in the region operate Boilers / Thermic fluid heaters using coal as fuel. Emission from this equipment is better represented by PM10 and SO₂ instead of PM10 and PM2.5.2. Vehicular emission is one of the major contributors of PM2.5. Industrial area of Pandesara and Sachin are in middle of heavy traffic due to good transport vehicles, public transport and private vehicles, the region is expected to receive significant contribution of PM2.5.3. SO₂ emission is mainly contributed by Fuel Based boilers and process emissions. Thus, it is more sensible to replace PM2.5 with SO₂ for assessment of CEPI score.			
Surface Water	BOD, Total Phosphorous, Total N	TKN, Phenolic Compound and Lead	
Justification: <ol style="list-style-type: none">1. BOD, Total N, Total P found in surface water in the lakes peripheral of GIDC Pandesara and Sachin is on higher side. Discharge from CETPs of GIDC Sachin and Pandesara is not contaminating these Surface Water Source and higher values of these parameters should not be attributed from Industrial Discharge. From google image one can see that CETP discharge is into Khadi and not on surface water leading to these lakes. These parameters are on higher side may be due to use of these lake water for washing, cattle bathing			



સાઉથ ગુજરાત ટેક્સટાઇલ પ્રોસેસર્સ એસોસીએશન

South Gujarat Textile Processors Association

Plot No. 200, Vrajlal Mohanlal Dhamanwala Complex, G.I.D.C. Estate, Opp. S.B.I. Pandesara, SURAT-394 221.

E-mail : info@sgtpa.com Website : www.sgtpa.com Ph. (0261) 2896140, 2896141 Fax : (0261) 2896142

purpose or may be due to contamination of village sewage into these lakes. It is base less consideration of considering lake water parameter and link with industrial pollution.

2. The Khadi in case of GIDC, Pandesara is Bhedwad and in case of GIDC Sachin is Gabheni. This Khadi receives wastewater from upstream of CETP discharges as it flows through entire city of Surat. It receives wastewater from upstream side industrial estates, STP discharges, Unauthorized sewage and industrial waste water discharge. The sample withdrawn from downstream of CETP discharge does not spells upstream parameter and does not define the contamination of surface water due to CETP discharge.
3. In such circumstances it is more logical and scientific to assess for parameters which is contributed due to industrial waste water along such as, more specific to Textile and Chemical Industries are TKN, Phenolic Compound and Lead. TKN represents organic Nitrogen which is contributed due to industrial waste water, Phenolic compound and Lead comes from dye molecules which is predominantly used for Textile Processing.

Ground Water	TDS, TH and Total Iron	TKN, Phenolic Compound and Lead
--------------	------------------------	---------------------------------

Justification:

1. Borewell water / ground water samples were withdrawn from the sampling point as identified in Google Map attached in **Annexure 1**. The entire area of sampling is near to Sea Cost and there is sea water intrusion into the ground water resulting in higher TDS and High TH level. These parameters thus cannot form basis of calculation of CEPI score.
2. Electrical Conductivity Map prepared for entire India by Central Ground Water Board in the year 2010 indicates very high salinity in the Surat Region. So the higher level of TDS and so TH is due to sea water intrusion. The map is attached in **Annexure 2** for reference
3. Thus here, again parameters should be industrial specific parameters such as TKN, Phenolic Compound and Lead indicating any contamination of ground water with industrial wastewater.

Monitoring locations shall be same as proposed by CPCB in the year which is provided with coordinate in **Annexure 2**.

Sir, we request you to put forward our request to GPCB / CPCB for change in parameters s proposed by us. Let us know of you need any further information.

Thanking you and Regards

For **South Gujarat Textile Processors Association**

President

Sampling Point Locations as per CPCB

Annexure 1

**Ambient Air, Surface Water and Ground Water
Monitoring Location for Sachin GIDC and
Pandesarra GIDC in the Year of 2018**



ENPRO Enviro Tech and Engineers Pvt. Ltd.

306, Royal Park, Adajan Road, Surat – 395 009, Gujarat, INDIA

Ph.: +91-261-2786130 Fax.: +91-261-2786129

Email: info@enpro.co.in ; mrugank@enpro.co.in

Web – www.enpro.co.in

1. Ambient Air Locations in Pandesara GIDC

Sr. No.	Location Name	Latitude	Longitude
1	SGTPA Office	21° 8'39.06"N	72°50'52.38"E
2	Skill Development Center	21° 7'53.41"N	72°50'33.82"E
3	Pandesara Pumping	21° 8'40.43"N	72°49'47.24"E
4	CETP of PIL	21° 7'29.50"N	72°49'30.62"E

Figure 1: Ambient Air Monitoring Locations for 10 Km Radius Map Locations in Pandesara GIDC

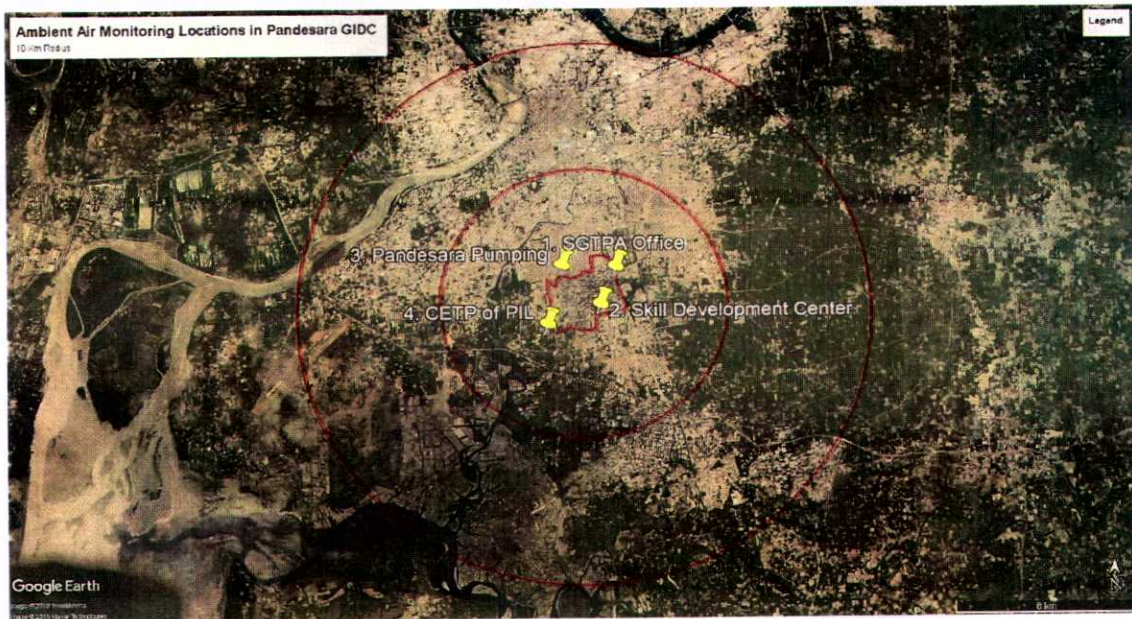
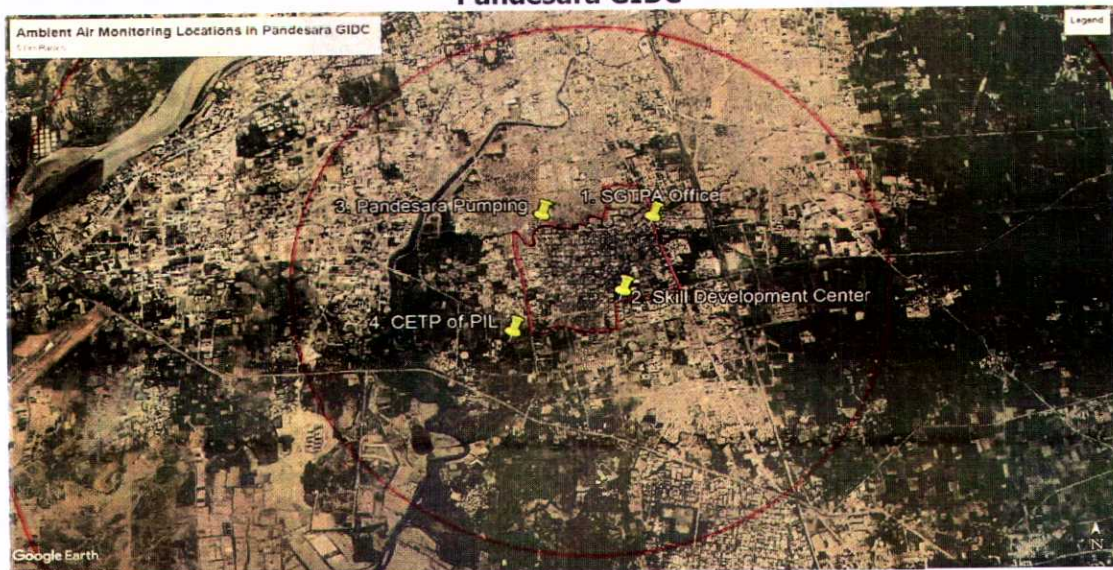


Figure 2: Ambient Air Monitoring Locations for 5 Km Radius Map Locations in Pandesara GIDC



2. Ambient Air Locations in Sachin GIDC

Sr. No.	Location Name	Latitude	Longitude
1	Rajlaxmi Fashion	21° 5'50.92"N	72°51'59.78"E
2	Diamond Park	21° 4'42.14"N	72°51'58.07"E
3	ITI Building	21° 5'0.04"N	72°51'21.79"E
4	CTx Life Science	21° 6'20.30"N	72°50'46.93"E

Figure 3: Ambient Air Monitoring Locations for 10 Km Radius Map Locations in SachinGIDC

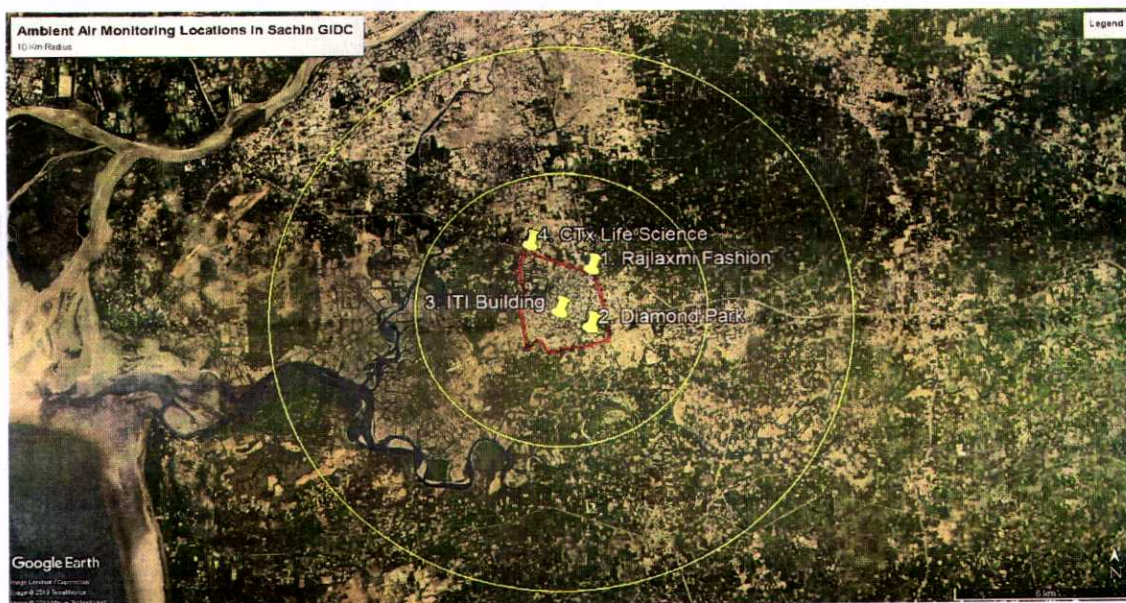


Figure 4: Ambient Air Monitoring Locations for 5 Km Radius Map Locations in SachinGIDC

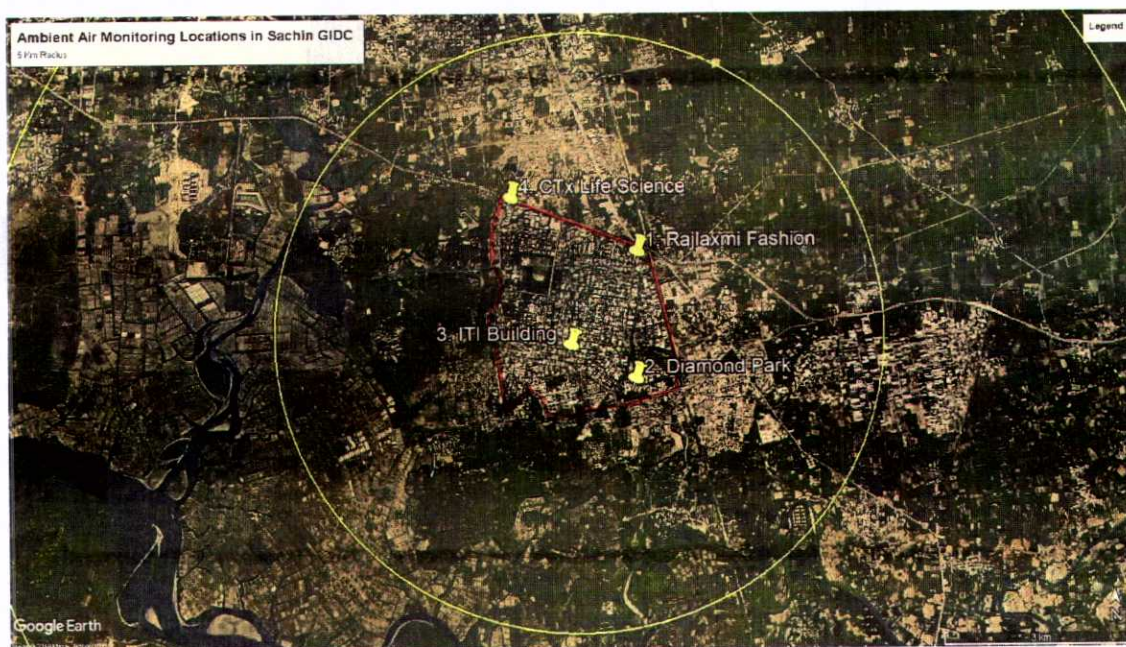
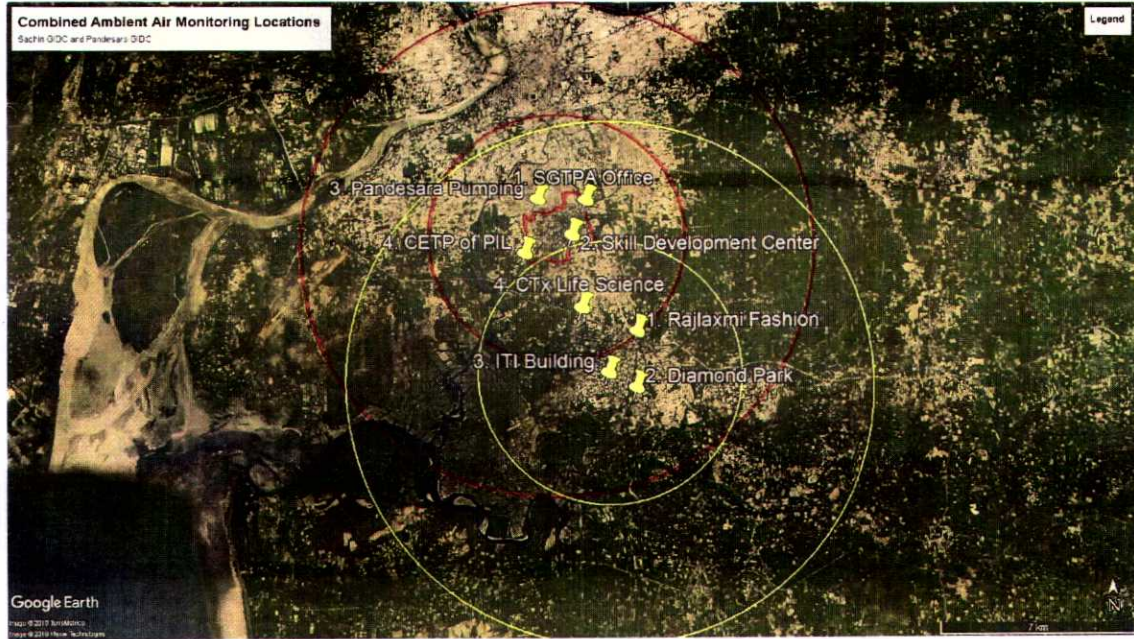


Figure 5: Combined Ambient Air Monitoring Locations for Sachin and Pandesara GIDC



3. Surface Water Monitoring Locations

Sr. No.	Location Name	Latitude	Longitude
1	Bamroli Pond	21° 8'13.84"N	72°48'52.33"E
2	Jiav lake	21° 6'57.06"N	72°50'7.75"E
3	Bhedwad Khadi	21° 7'13.80"N	72°48'28.20"E
4	Gabheni Khadi	21° 5'21.30"N	72°49'53.20"E
5	PIL CETP Outlet	21° 7'23.53"N	72°49'25.05"E
6	Combined Outlet of CETP at CTx	21° 6'17.40"N	72°50'41.30"E

Figure 6: Surface Water Monitoring Locations for Sachin and Pandesara GIDC

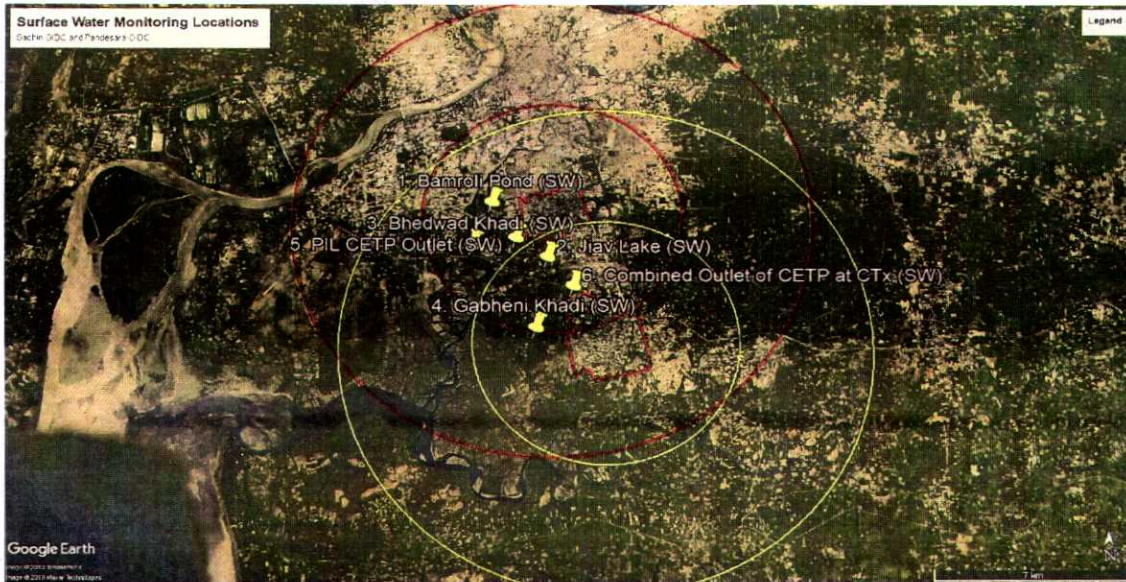
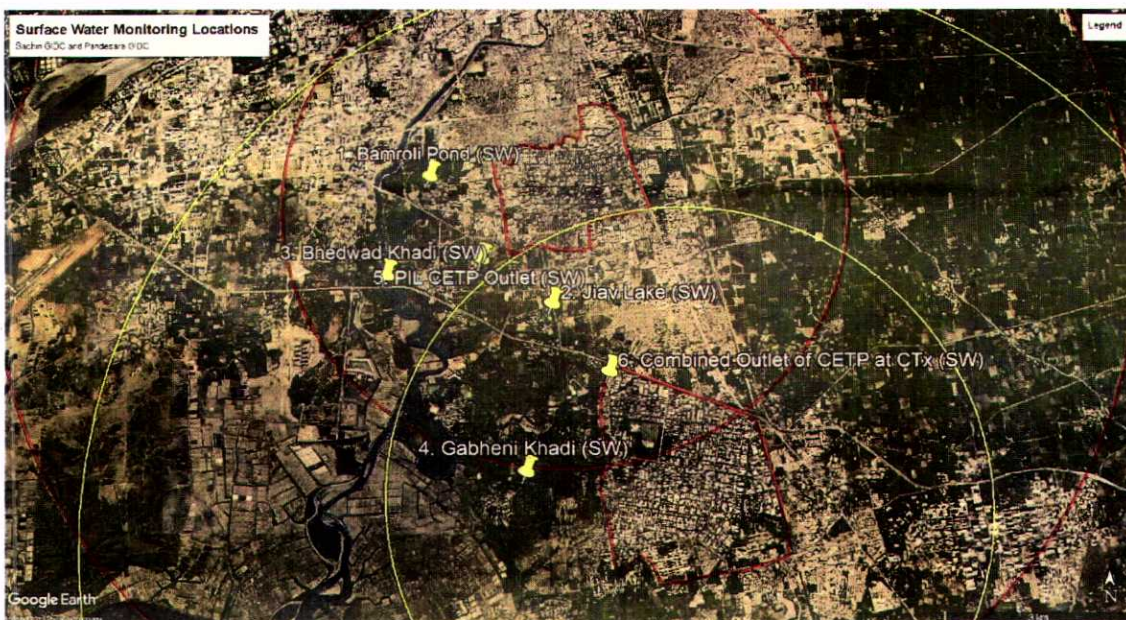


Figure 7: Enlarged view of Surface Water Monitoring Locations for Sachin and Pandesara GIDC



4. Ground Water Monitoring Locations

Sr. No.	Location Name	Latitude	Longitude
1	Vidheswar Temple	21° 8'14.05"N	72°49'2.95"E
2	Jlav	21° 6'54.28"N	72°50'11.34"E
3	Laxmi Vishnu Mill	21° 8'8.55"N	72°51'3.54"E
4	Chiku Wadi	21° 9'6.98"N	72°50'11.62"E
5	Sachin Infra	21° 5'50.72"N	72°50'45.98"E
6	Yoganand Farm	21° 5'46.17"N	72°52'24.58"E
7	Talangpor	21° 4'24.80"N	72°50'57.20"E
8	Diamond Park	21° 4'42.63"N	72°51'57.61"E

Figure 8: Ground Water Monitoring Locations for Sachin and Pandesara GIDC

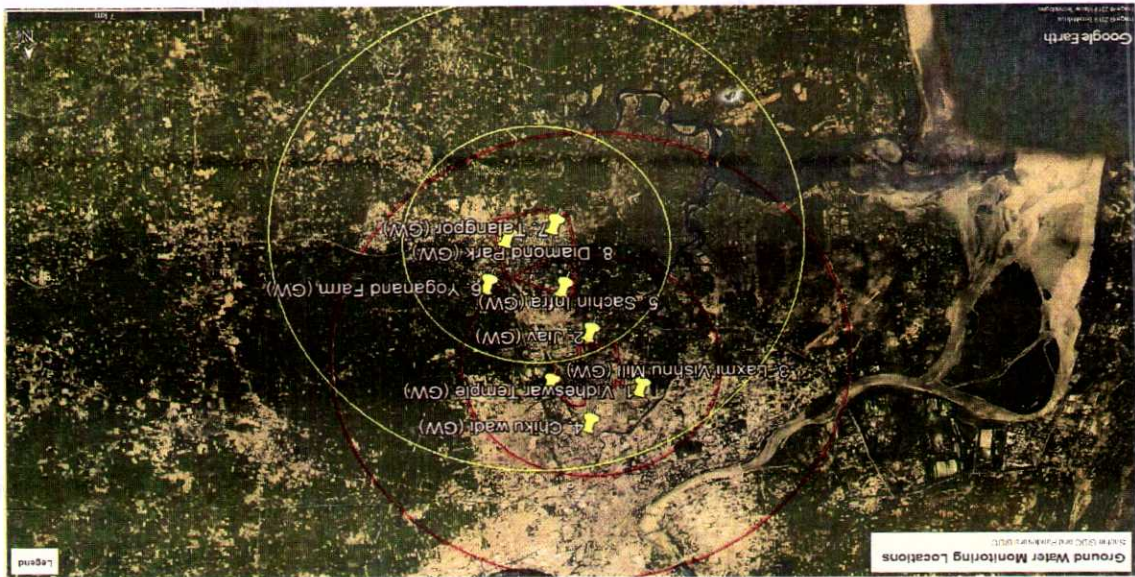
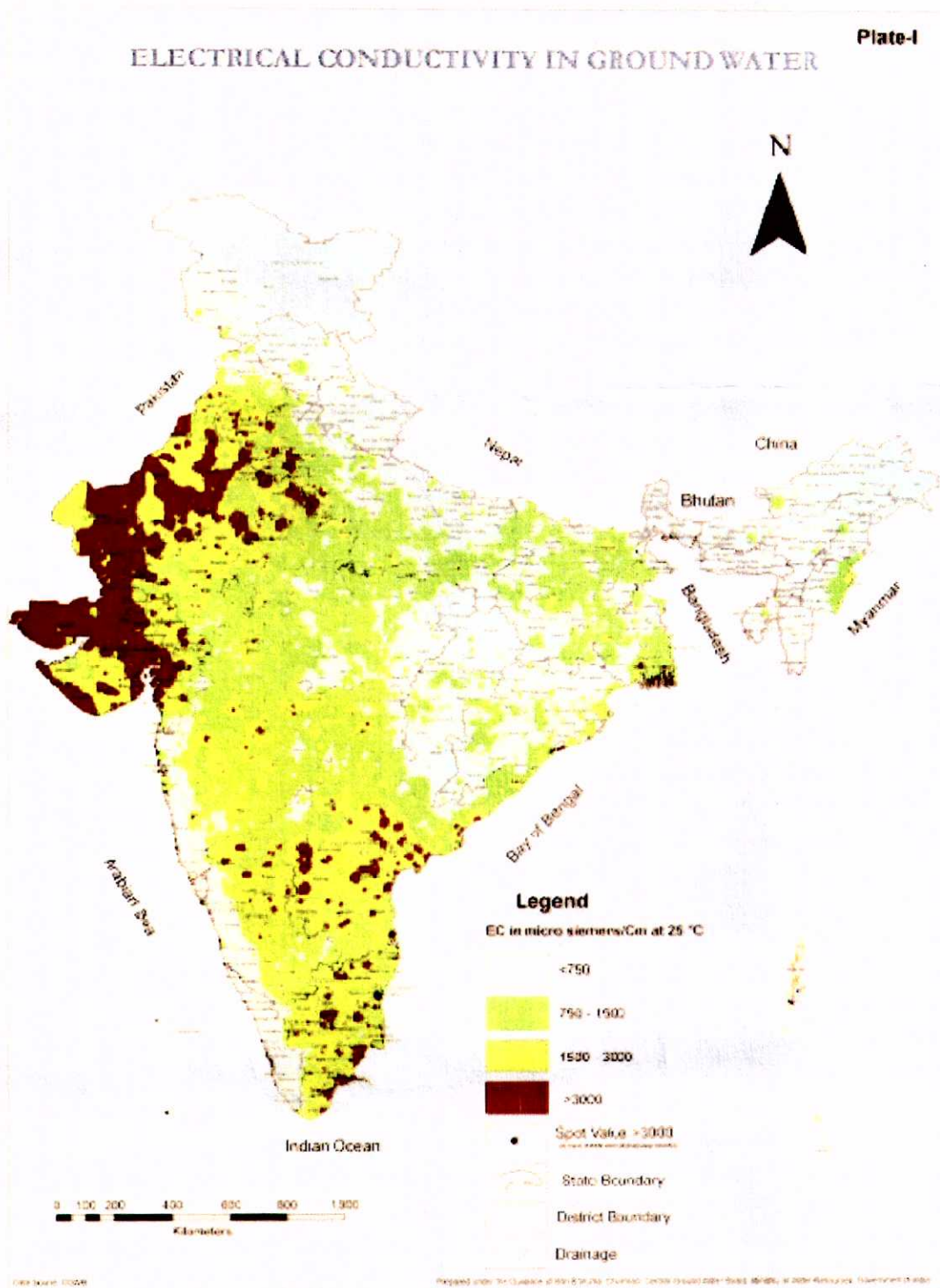


Figure 9: Enlarged view of Ground Water Monitoring Locations for Sachin and Pandesara GIDC

Annexure 2
Salinity Map as per CGWA Report



Revised details of sampling points criteria pollutants from NTIEM-Narol

Air Monitoring

A. Existing location:

1. Centre of excellence- Vatva
2. Patel Chem Phase 2 – Vatva
3. Mamta Intermediates – Narol
4. Hemline textiles – Narol

B. Modified locations:

- i. Mamta Intermediates – Narol
- ii. Bhagyoday textiles – Narol

C. Justifications for change of location if any: M/s Hemline textiles – Narol (Item A.4 above) is replaced by Bhagyoday textiles – Narol, as M/s Hemline textiles is located on Narol-shahwadi road which is unpaved road causing heavy dust during movement of vehicles. This road is going to be renovated by AMC very shortly, hence to avoid erroneous results due to unpaved road future renovation this sampling location is required to be changed.

D. Existing criteria pollutants : (As per the CPCB's CEPI Calculation-2018)

1. PM_{10}
2. $PM_{2.5}$
3. SO_x

E. Proposed criteria pollutants: (As per the MoM for a date. 20.05.2016 with Zonal office, CPCB at GPCB Gandhinagar to discuss and finalize additional sampling locations and selection of parameters for CEPI score calculation)

1. PM_{10}
2. SO_x
3. NO_x

F. Justifications for change in criteria pollutants if any: *The vehicular and construction activities are majorly responsible for the $PM_{2.5}$ concentration, while NO_x is predominantly attributed by the use of fossil fuel during Industrial activities.*

Ground water Monitoring

A. Existing location:

1. Bore well no. 12, VIA-Vatva
2. CETP Vatva
3. Hemline textiles – Narol
4. Swan Energy – Narol

B. Modified locations: Nil

C. Justifications for change of location if any: Not Applicable

D. Existing criteria pollutants : (As per the CPCB's CEPI Calculation-2018)

1. TDS (Total Dissolved Solids)
2. TN (Total Nitrogen)
3. Total Hardness

E. Proposed criteria pollutants : (As per the MoM for a date. 20.05.2016 with Zonal office, CPCB at GPCB Gandhinagar to discuss and finalize additional sampling locations and selection of parameters for CEPI score calculation)

1. Bio-chemical oxygen demand (BOD)
2. Fluorides
3. TKN (Total Kjeldahl Nitrogen)

F. Justifications for change in criteria pollutants if any: CPCB has changed the criteria pollutants after completion of monitoring. we would like to stick to criteria pollutants as per revised CEPI guidelines -2016 and Mom dated20/05/2016

G. Surface water Monitoring

A. Existing location:

1. CETP Vatva Outlet
2. Mega line Outlet
3. Kharikat canal at Vinzol bridge
4. Mirolu pumping station
5. Vinzol lake

6. Canal Near Kankaria Textile – Narol

B. Modified locations:

1. CETP Vatva outlet- Not to be considered in the calculation of factor B (As per CEPI Guideline -2009 & 2016)
2. Vinzol lake – Vatva
3. Canal Near Kankaria Textile – Narol
4. Mega line outlet- Not to be considered in the calculation of factor B (As per CEPI Guideline -2009 & 2016)

C. Justifications for change of location if any: The Kharikat canal at Vinzol Bridge and Miroli Pumping station locations are required to remove because of the following reasons.

- i. Kharikat canal at Vinzol Bridge: *The sampling location is down stream of Vatva GIDC which contains mostly untreated sewage from STPs of Naroda & Odhav. Hence, it is not true representative location of Vatva.*
- ii. Miroli Pumping station: *This location contains a mixture of the effluent of sewage & industrial wastewater. The total volume of it is 1150 MLD out of which the industrial effluent of Vatva-Narol is only 100 MLD i.e. 8.7 % of the total volume of mixture. Moreover, the Sewage coming there is not meeting the Discharge Norms. Hence, the quality of the effluent at Miroli Pumping Station is adversely affecting the CEPI score of Vatva-Narol area.*

D. Existing criteria pollutants : (As per the CPCB's CEPI Calculation-2018)

1. Bio-chemical oxygen demand (BOD)
2. TP (Total Phosphorus)
3. T NH₄-N (Total Ammonical Nitrogen)

E. Proposed criteria pollutants: (As per the MoM for a date. 20.05.2016 with Zonal office, CPCB at GPCB Gandhinagar to discuss and finalize additional sampling locations and selection of parameters for CEPI score calculation)

1. pH
2. Copper (Cu)
3. Phenolic compounds

F. Justifications for change in criteria pollutants if any: *The current parameters may be attributed by sewage, but the proposed parameters are based on the influence of industrial activity in the cluster.*



Fwd: Letter to GCCCI for CEPI 2022

Babubhai Patel (Chairman - NIA) <niacetp@gmail.com>
To: yogesh@avanidyechem.com, gccci@gujaratchamber.org

Wed, Nov 9, 2022 at 6:44 PM

Dear Sir,
Find attached the followup of today's meeting for CEPI

For Nandesari Industries Association
Bharat Shah
(President)

 **GCCI LETTER FOR CEPI AND ANNEXURES AFTER HYBRID MEETING.pdf**
117K





NANDESARI INDUSTRIES ASSOCIATION

Plot No. 134/1, G.I.D.C. Estate, Opp. Shopping Centre, Nandesari-391 340, Dist. Baroda.
Phone : 0265-2840390 Fax : 0265-2840 890 E-mail : nia_ndsr@yahoo.co.in, niandsr@gmail.com

CHAIRMAN

Babubhai C. Patel
Mob. : 98240 01925

PRESIDENT

Bharat M. Shah
Mob. : 98250 40341

VICE-PRESIDENT

Kamlesh J. Palan
Mob. : 98240 31883

HON. SECRETARY

Aashish R. Amin
Mob. : 98240 24796

HON. TREASURER

Amratbhai Sitapara
Mob. : 98252 43404

HON. JT. SECRETARY

Rajesh C. Dhabale
Mob. : 99783 77677

November 09, 2022

To,
Mr. Shrenik Merchant
Chairman - Environment Committee
Gujarat Chamber of Commerce & Industry
Ashram Road,
Ahmedabad - 380009

Subject: Followup of the Hybrid meeting with CEPI Stake holders and GCCI held on November 9, 2022

Dear Sir,

With reference to the Hybrid meeting of GCCI with the CEPI Stakeholders today, as discussed, find attached the CEPI Locations for GIDC, Nandesari Area only. (after separation from Nandesari - PCC Cluster).

We have changed the locations of one Ambient Air Quality monitoring station and added another station.

Also included is the list of Ground Water Sampling Locations and the Surface Water Sampling locations.

The selection of criteria Pollutants for consideration with justification is attached for 2022.

Due to both administrative and technical grounds, we want to separate out GIDC, Nandesari and PCC Cluster as a separate entity for CEPI as discussed in meeting today.

The necessary information is enclosed herewith.

GPCB may deal with PCC Area as a separate entity.

For Nandesari Industries Association

Babubhai Patel
(Chairman)



Ambient Air Quality Monitoring: **NANDESARI GIDC, VADODARA (PROPOSED)**

Code	Stations (2018/2020)	GPS Co-ordinates	Change of Location	Remarks
AAQ 1	M/s. Amophil Chemicals Pvt. Ltd. 124/33, A-B, GIDC, Nandesari Dist. Vadodara - 391340 (2018 / 2020)	22 24 17.61N, 73 05 35.34E	NIA HALL 22 24 53.75N, 73 05 14.69E (2022)	To minimize the external contribution
AAQ 2	M/s. IL & FS Skill Graduation Centre 8/7, GIDC, Nandesari Dist. Vadodara - 391340 (2018 / 2020)	22 24 29.16N, 73 05 12.63E	NO CHANGE	
AAQ 3	M/s. Camphor & Allied Products Ltd. 3, GIDC, Nandesari Dist. Vadodara - 391340 (2018 / 2020)	22 25 01.78N, 73 05 38.86E	NO CHANGE	
AAQ 4	Chamunda Nagar, Nandesari Dist. Vadodara - 391340 (New Station - 2022)	22 23 45.11N, 73 05 53.24E	ADDITIONAL LOCATION (2022)	

Ground water Sampling details

Code	Stations	GPS Co-ordinates	Change of Location (2020)	Remarks / Justification
GW 1	Bore well no. 3, GIDC, Beside HP Petrol Pump At Jn of ABS & Link Pharma chem Ltd. Road GIDC, Nandesari, Vadodara	22 24 21.0N, 73 05 31.0 E	Jalaram Bore No. 9	Proximity of petrol pump. Hence minor change nearby
GW 2	Bore well no. 2, GIDC Nandesari Village Next to Nandesari Gram Panchayat GIDC, Nandesari, Vadodara	22 24 31.95.0N, 73 05 04.75 E		
GW 3	Bore well no. 5, GIDC Next to GIDC Fire Station GIDC, Nandesari, Vadodara	22 24 52.34N, 73 05 14.86 E	Borewell No. 5a, Nr. K N PATEL STORES	
GW 4	Bore well inside the premises of M/s. NECL TSDF, GIDC, Nandesari, Vadodara	22 24 42.4N, 73 05 52.3 E	New Bore in TSDF	
GW 5	Borewell in Radiapura Village	22 24 13.01N, 73 06 03.61E	New Additional Borewell (2022)	

Surface water Sampling details

Code	Stations	GPS Co-ordinates	Change of Location (2020)	Remarks/ Justification
SW 1	Treated outlet of CETP, Nandesari, GIDC Vadodara	22 24 35.6N, 73 05 49.3 E	Upstream of Mini River near check dam	As CETP outlet can not be considered as surface water
SW 2	Mini river at Angadh Village, Dist Vadodara	22 23 6.8N, 73 05 15.9 E	Downstream of Mini River at Sherkhi Bridge	Holistically to cover impact of both Nandesari and PCC area
SW 3	Pond Nr. M/s. Jayant Agro. PCC Area PO Petrochemicals Vadodara	22 23 46.40N, 73 6 46.70 E	Mahi River (upstream)	Mostly dried and water gets accumulated in monsoon only
SW 4	ECP Channel after Koyali Pumping station	22 21 24.30N, 73 5 46.60 E	Mahi River (downstream)	ECP is effluent carrying channel and not a surface water

Selection of Criteria Pollutants:

Pollutants considered in 2018	Pollutants Proposed in 2020/2022	Remarks / Justification
Ambient Air Quality PM ₁₀ , PM _{2.5} , CO	Ambient Air Quality Ammonia, SO ₂ , CO	According to Source apportionment studies, it has been observed that Vehicular movement has significant impact on ambient PM Conc. Hence SO ₂ and NH ₃ are considered which are very much relevant to chemical industrial estate
Ground water Quality - Land TDS, T-hardness, Fe	Ground water Quality - Land Sulphate, Nitrate, Fe	Natural ground water has high TDS and high hardness in this area due to sea water ingress. Hence Sulphate and Nitrate have been identified
Surface Water BOD, T-Phosphate, T-Ammoniacal nitrogen	Surface Water BOD, Sulphate, T-Ammoniacal nitrogen	Phosphate is predominantly contributed by domestic activities and agriculture. Hence Sulphate is identified



NANDESARI INDUSTRIES ASSOCIATION

Plot No. 134/1, G.I.D.C. Estate, Opp. Shopping Centre, Nandesari-391 340, Dist. Baroda.
Phone : 0265-2840390 Fax : 0265-2840 890 E-mail : nia_ndsr@yahoo.co.in, niandsr@gmail.com

CHAIRMAN

Babubhai C. Patel
Mob. : 98240 01925

PRESIDENT

Bharat M. Shah
Mob. : 98250 40341

VICE-PRESIDENT

Kamlesh J. Palan
Mob. : 98240 31883

HON. SECRETARY

Aashish R. Amin
Mob. : 98240 24796

HON. TREASURER

Amratbhai Sitapara
Mob. : 98252 43404

HON. JT. SECRETARY

Rajesh C. Dhabale
Mob. : 99783 77677

November 09, 2022

To,
Mr. Shrenik Merchant
Chairman - Environment Committee
Gujarat Chamber of Commerce & Industry
Ashram Road,
Ahmedabad - 380009

Subject: Followup of the Hybrid meeting with CEPI Stake holders and GCCI held on November 9, 2022

Dear Sir,

With reference to the Hybrid meeting of GCCI with the CEPI Stakeholders today, as discussed, find attached the CEPI Locations for GIDC, Nandesari Area only. (after separation from Nandesari - PCC Cluster).

We have changed the locations of one Ambient Air Quality monitoring station and added another station.

Also included is the list of Ground Water Sampling Locations and the Surface Water Sampling locations.

The selection of criteria Pollutants for consideration with justification is attached for 2022.

Due to both administrative and technical grounds, we want to separate out GIDC, Nandesari and PCC Cluster as a separate entity for CEPI as discussed in meeting today.

The necessary information is enclosed herewith.

GPCB may deal with PCC Area as a separate entity.

For Nandesari Industries Association

Babubhai Patel
(Chairman)



Ambient Air Quality Monitoring: NANDESARI GIDC, VADODARA (PROPOSED)				
Code	Stations (2018/2020)	GPS Co-ordinates	Change of Location	Remarks
AAQ 1	M/s. Amophil Chemicals Pvt. Ltd. 124/33, A-B, GIDC, Nandesari Dist. Vadodara - 391340 (2018 / 2020)	22 24 17.61N, 73 05 35.34E	NIA HALL 22 24 53.75N, 73 05 14.69E (2022)	To minimize the external contribution
AAQ 2	M/s. IL & FS Skill Graduation Centre 8/7, GIDC, Nandesari Dist. Vadodara - 391340 (2018 / 2020)	22 24 29.16N, 73 05 12.63E	NO CHANGE	
AAQ 3	M/s. Camphor & Allied Products Ltd. 3, GIDC, Nandesari Dist. Vadodara - 391340 (2018 / 2020)	22 25 01.78N, 73 05 38.86E	NO CHANGE	
AAQ 4	Chamunda Nagar, Nandesari Dist. Vadodara - 391340 (New Station - 2022)	22 23 45.11N, 73 05 53.24E	ADDITIONAL LOCATION (2022)	